

WinRad32 SPECIFICATIONS

WinRad-32 Server/Router Software (WR32-060-0002)

The WinRad Server/Router provides software to receive, compress, and forward DICOM images to other WinRad systems. It includes all the features of the WinRad Advanced Workstation, and supports PNG lossless, JPEG lossy, and Wavelet lossy compression types.

Minimum Platform Requirements

Pentium 550 MHz or faster PC with 128 MB or more RAM, 8 GB or larger hard disk. Network Interface Card and associated WinSock TCP/IP drivers. CD-ROM required for installation. SuperVGA display adapter capable of 800 x 600 pixels at 256 colors. US Robotics Courier V. Everything modem required if serial communication of images is necessary. A Symantec PC Anywhere 32 license is required.

Operating System

Windows 98, ME, NT 4.0 or Windows 2000. Windows NT or 2000 preferred.

DICOM Support

Software acts as a DICOM Storage Class SCP and Query Class SCU. Storage Class SCU and Print Class SCU are available as options. Supports reception of DICOM grayscale and color images including Secondary Capture, CT, MR, CR, NM, US, XA, and RT. DICOM multiframe objects are supported. Six concurrent DICOM associations are supported; additional DICOM associations are available as options.

Compression

Compression of images that will be sent to other WinRads.

Lossless: PNG, up to 3:1 compression.

Lossy: JPEG 8- and 12-bit, up to 30:1 depending on modality.

Wavelet 8-, 12- and 16-bit up to 100:1 depending on modality.

Compression settings are user-selectable by modality type. CT Tuning enhances readability of CT images compressed with either JPEG or Wavelet.

Autorouting

Studies may be sent to other WinRad stations manually or automatically. Automatic routing is based on values embedded by the originating modality into the DICOM image headers that are received by the Server/Router. These values may be DICOM AE Title or Reading Physician

Name. The value acts as a key into the Server/Router's Communications Directory, and any matching entries in the directory become destinations for delivery of the study. The Advanced Routing option allows creation of routing scripts and on-call calendars for routing based on any DICOM criteria.

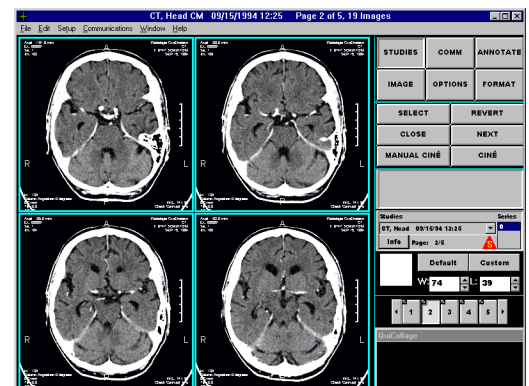
With the DICOM Send option, studies may also be routed via DICOM protocol to non-WinRad stations that act as Storage Class SCPs.

Communications with Remote WinRad Stations

The Server/Router communicates with remote WinRad stations using one or more serial links, and/or one or more TCP/IP connections over local networks, ISDN, DSL Cable, or other IP-based networks. With the purchase of appropriate options, additional communication sessions can be active concurrently.

Media

Delivered on CD-ROM. Printed operator manuals are also delivered in machine-readable (Adobe PDF) format. One HASP software protection lock delivered with each license, placed on computer's parallel port to enable and configure system parameters.



line
IMAGING